

# Emergency Alarm System (EAS) ©2008 GPSafety

## Introduction:

This is a system that allows a computer to send an alert message to other computers in the immediate local network. Due to the nature of networking and computers this can not be guaranteed to be 100% effective, but once set up its pretty close.

## Before installation:

Although there are no reports of problems with this software, it is always wise to fully back up any computers before loading new software.

You should also shut down all open programs before loading this software.

## Fast Installation:

\*\*\*This program may not install if you are not logged on as an administrator\*\*\*

Your computer should be connected to your network.

Open the CD. Run the setup file.

You will be asked to confirm that agree to all conditions linked to using this software.

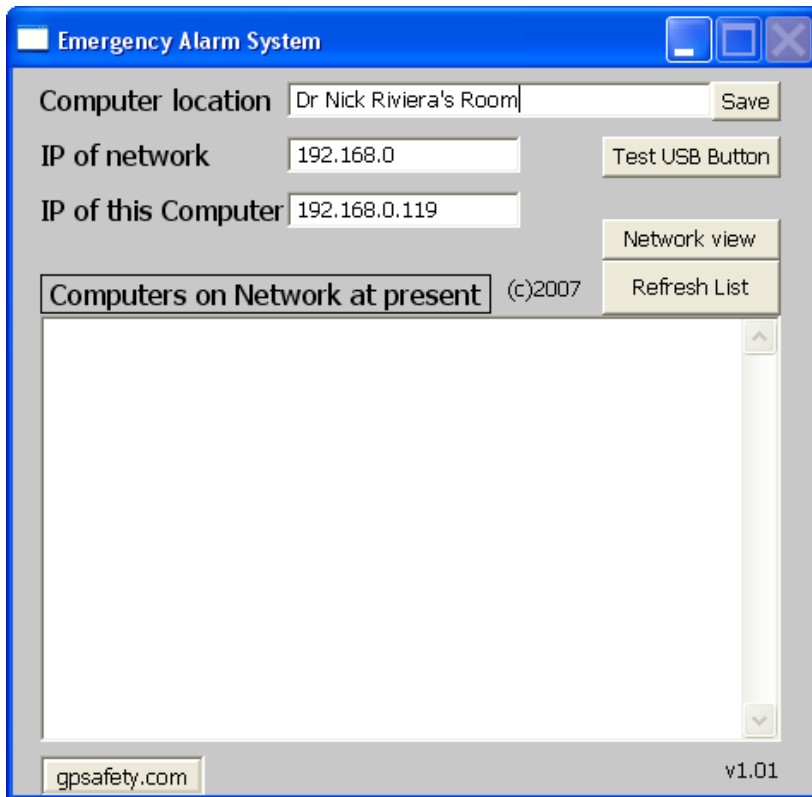
Once the files are installed restart the computer.


If this computer is going to have a button, plug it into a USB port.

When the Computer restarts the EAS screen should appear.

If any firewall warning come up- Unblock Emergency alarm, as below.





A small blue circle with a red cross through it  should be in the task bar



If all this has happened then everything is installed!.

To Configure your computer enter a description of where your computer is. To do this click on the white box with “none” in it and enter a description up to 30 letters. This should describe where your computer is, ie Nurses Station, Consultation room 1, Dr Riviera’s room etc. This is the message that will appear on other computers in an emergency. Once you have entered a description click the save box.

Make a note of the IP address of the network and of this computer.

Repeat the above steps to load the program on to every computer in your network.

EAS is loaded to your computers C: drive and creates a new folder called C:\DRS . This folder contains all the programs and files to run EAS. Installing this software changes one registry setting so that this software will automatically load when you start windows.

### Running the software

If there is a small blue circle in the system bar on the right side then the software is running

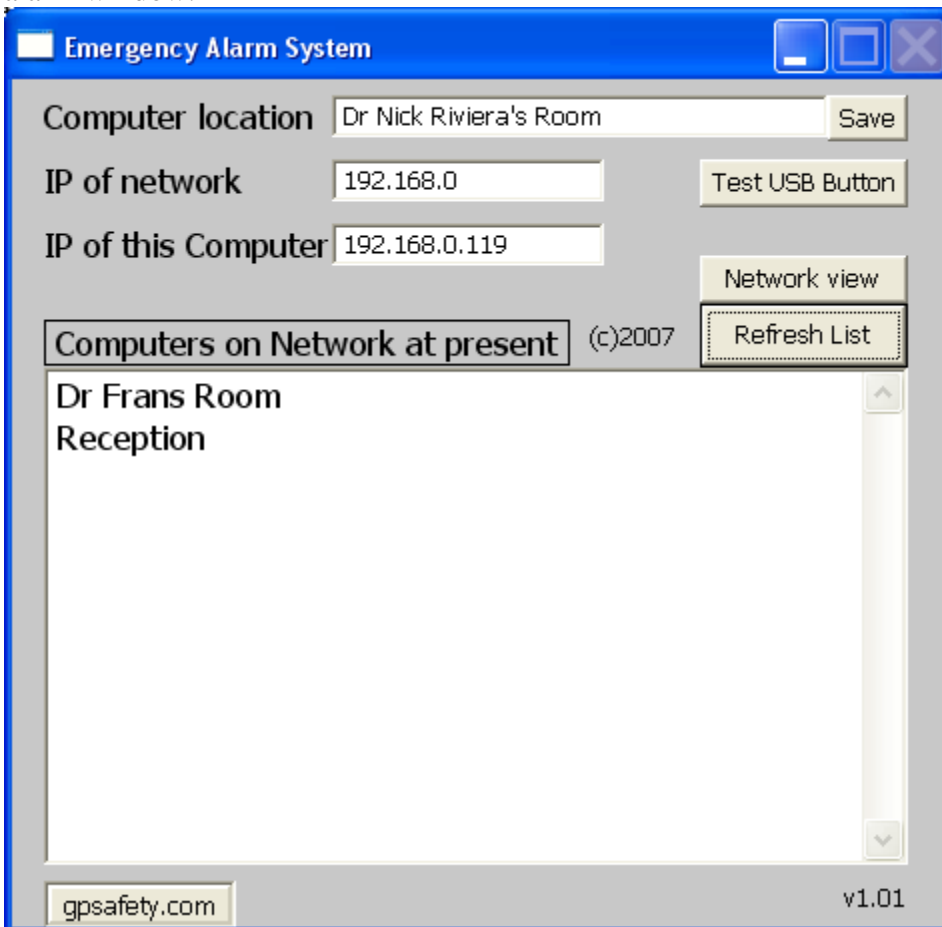


If there is a blue circle then the software is functioning and can see other computers in the network.



This indicates no other computers are visible on the network.

To open the main window Right Click on the blue circle. And choose open emergency alarm window.



This shows that this computer is located in Dr Nicks room.

Two other computers are connected, Dr Frans's and the Reception Computer.

**[Refresh List]** This list is updated every 3 minutes, but clicking Refresh list will update the list now. Any computers on the network running EAS should be automatically detected.

**[Test USB Button]** This will put the software into test mode. If there is a USB button attached you can press it now to see if it works. A message should appear saying

\*\*\*Button Pushed\*\*\*

\*\*\*Button Pushed\*\*\*

The program will revert to normal mode after 60 seconds or if the [Test USB Button] is pressed again.

**[Network View]** displays a list of network information and program operation; it is there to help solve problems and doesn't usually need to be accessed.

IP of Network 192.168.0 These are the first 3 numbers of your network. The default setting is such that when the EAS software runs it should detect the correct network automatically, and then find all other computers in that network ie start with the same first 3 numbers.

IP of this computer 192.168.0.119 This is the IP of your computer. The first 3 numbers should be the same as the IP of network.

### **The USB Button**



Just plug this into the computer on a spare USB port. The button should automatically light up. The button depending on the batch may be red, white or blue and the light may also be different colors.

Pushing the button should trigger the alarm system, and send an alert to all connected computers.

After the button is pressed it will flash a few times then resume its normal color.

The computer that triggers the alert will not display any messages. This is intentional as if the doctor is being threatened they may not wish to have anything that provokes further

behavior. The small blue icon in the system tray will change to a flashing red and yellow exclamation mark.

### **Protocols and procedures**

As with all systems, it is suggested that you check the EAS every month.

To do this you should make sure that

- The Button is illuminated and works.
- That the blue circle is present and moving.
- That when you open the EAS windows you can see other computers on the list.
- Actually press the button and make sure an alarm is triggered.
- Check that if there is a screen saver on your computer that the button will still work even when the screen saver is active.

### **Trouble Shooting**

If the computers on your network don't share the same IP network then the system will not work.

This system does not use TCP, but rather UDP which is faster and much less intensive on hardware and networks. It is not however 100% guaranteed that an alarm message will get through, so each message is sent twice.

If you can't see other computers, but you are on the same network, then you may need to check the firewall settings.

To check the firewall on XP,

[Start][control panel][Security centre][windows firewall][exceptions]

“Emergency alarm” should be listed with a tick next to it. If it is not, then add it to the list by browsing to “C:\drs\App1.exe” and adding this.